

This document contains proprietary information and such information may not be disclosed to others for any purposes,
not used for sales/marketing/procurement purposes without written permission

REV	DESCRIPTION OF REVISION	ECN NO.	BY	DATE	APPROVED
A	Initial Release	—	H.wei	19/03/17	19/03/17

Notes:

Electrical characteristics

1.Impedance: $50\ \Omega$

2.Working voltage: $\leq 250\text{V}$

3.Insulation resistance: $\geq 1000\text{M}\Omega$

4.Dielectric strength: 750V

5.Contact resistance

Center contact $\leq 6\text{m}\Omega$

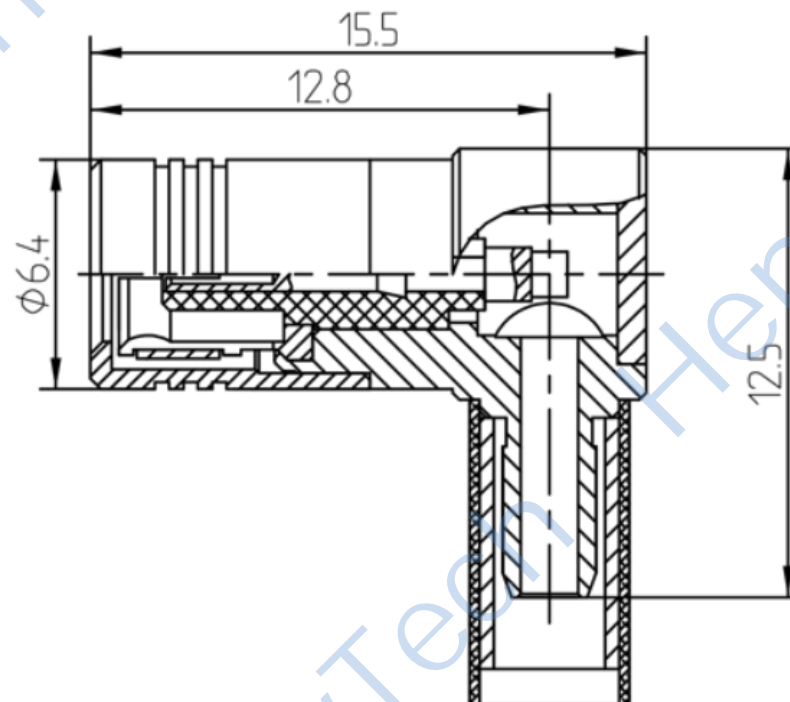
Outer contact $\leq 1\text{m}\Omega$

Material&Finish

Inner Contact: Beryllium copper, gold plated

Outer Contact: Brass, gold plated

Insulators: Teflon



Notes:

1. ALL SPECIFICATIONS ARE SUBJECT TO CHANGE NOTICE AT ANY TIME

2. CUSTOMER OUTLINE DRAWING FOR REFERENCE ONLY

DRAWN: H.wei 19/03/17
ENGINEER: L.yu 19/03/17
APPROVED: W.yi 19/03/17
TOLERANCES UNLESS OTHERWISE SPECIFIED
X ± 0.50
.X ± 0.20
.XX ± 0.10
ANGLES $\pm 1^\circ$

TITLE:

RF Coaxial Connector

PART NO: HL-SMB-KW3



DIMENSION IN MILLIMETERS (mm)

SIZE: A4	SCALE: N/A	SHEET: 1/1	REV: A
----------	------------	------------	--------